



珠澳設計中心
ZHUHAI MACAU DESIGN CENTRE

進駐企業公開招募

Studio Application Introduction



珠澳設計中心簡介

Introduction of ZMDC



位於珠海市十字門中央商務區灣仔片區珠海中心十二至十三層，十二層一共有二十間獨立工作室，面積由560平方呎-1420平方呎不等，鼓勵設計企業家以創意營商；十三層設有展覽廳、VIP會客室、多功能活動廳、小型會議室、公用空間、咖啡用膳會客區等。

設施及服務包括：光纖寬頻、簡約裝潢、桌椅文件櫃等傢俱、燈光照明、收費列印服務、郵件收取服務、前台接待服務、宣傳及推廣、商業配對、資源整合、會計、報稅、招聘、政府部門及銀行手續等收費服務、公共領域二十四小時保安及監控、公共會議室，並可以優惠價使用珠澳設計中心提供之其它空間及服務。

Zhuhai Macau Design Centre is located on the 12th - 13th floor of Zhuhai Tower, in the Wanzai area at the Cross Gate Central Business District of Zhuhai. In order to encourage a creative business approach, we provide 20 independent studios on the 12th floor, with 560 ft² - 1420 ft² in area. In the 13th floor, there are exhibition hall, VIP meeting room, multi-functional event hall, small-scale meeting room, common area, café and dinning area etc.,.

The infrastructure and service includes: optical fiber broadband, basic interior decoration, tables, chairs, and document cabinets, lighting system, charge printing service, mail receiving service, reception service, promotion and advertising, business matching, resource integration, accounting, tax filing, recruitment, charge government and bank formalities service, 24 hours security and surveillance, common meeting room, facilities and services in Zhuhai Macau Design Centre with discount.

交通

Transportation

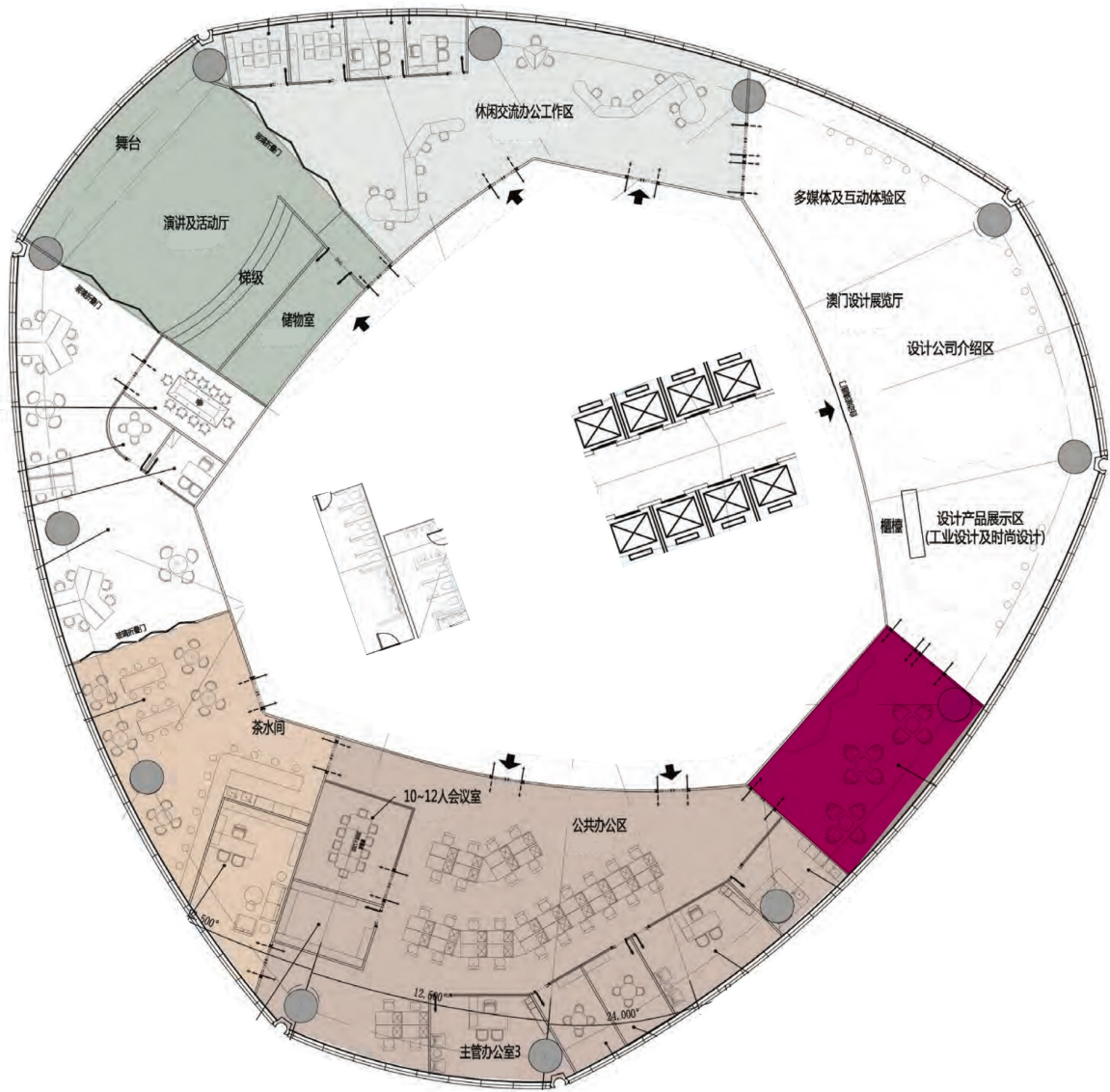


- 距橫琴新區、橫琴口岸（24小時通關至澳門）約10分鐘車程
Approximately 10 minutes' drive to Hengqin New Area and Hengqin Port (24 hours passenger clearance).
- 距拱北口岸、輕軌珠海站20分鐘車程（珠海中心輕軌站將於年底開通連接拱北及橫琴口岸）
Approximately 20 minutes' drive to Gongbei Port, Zhuhai station of Zhuhai intercity railway station (Zhuhai Tower station will start to connect with Gongbei Port and Hengqin Port at the end of this year)
- 距九洲港碼頭25分鐘車程
Approximately 25 minutes' drive to Jiuzhou Port.
- 距珠海金灣機場30分鐘車程
Approximately 30 minutes' drive to Zhuhai Jinwan Airport.

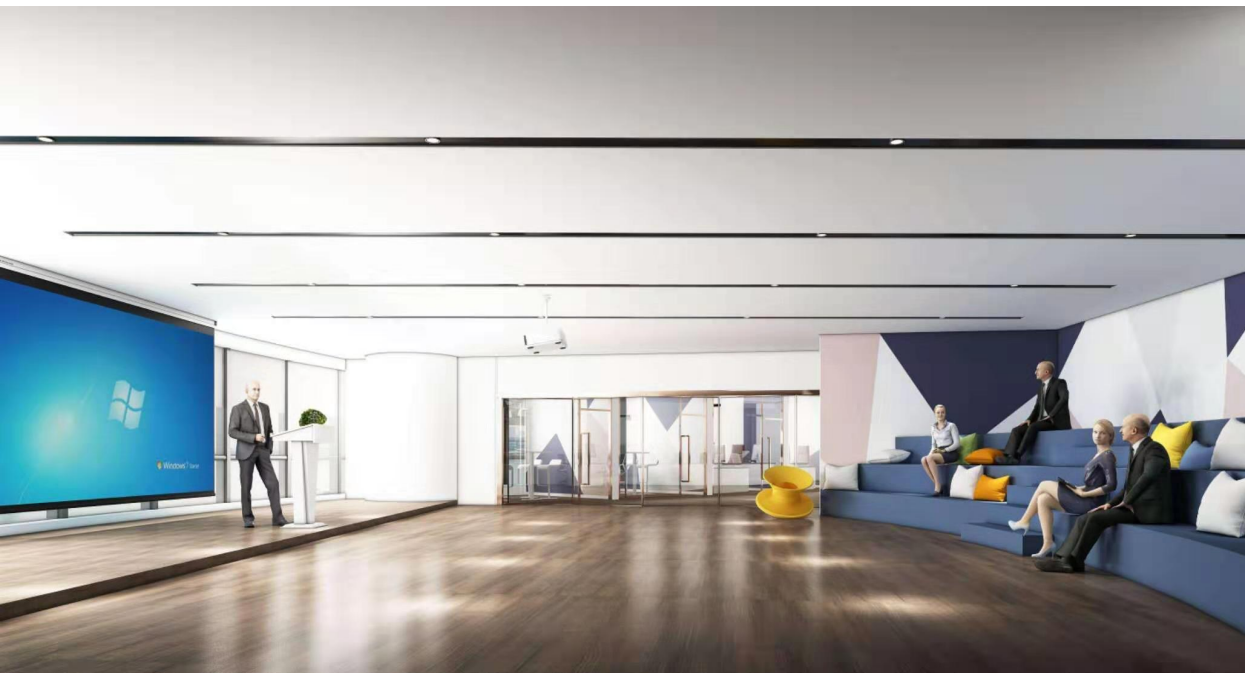
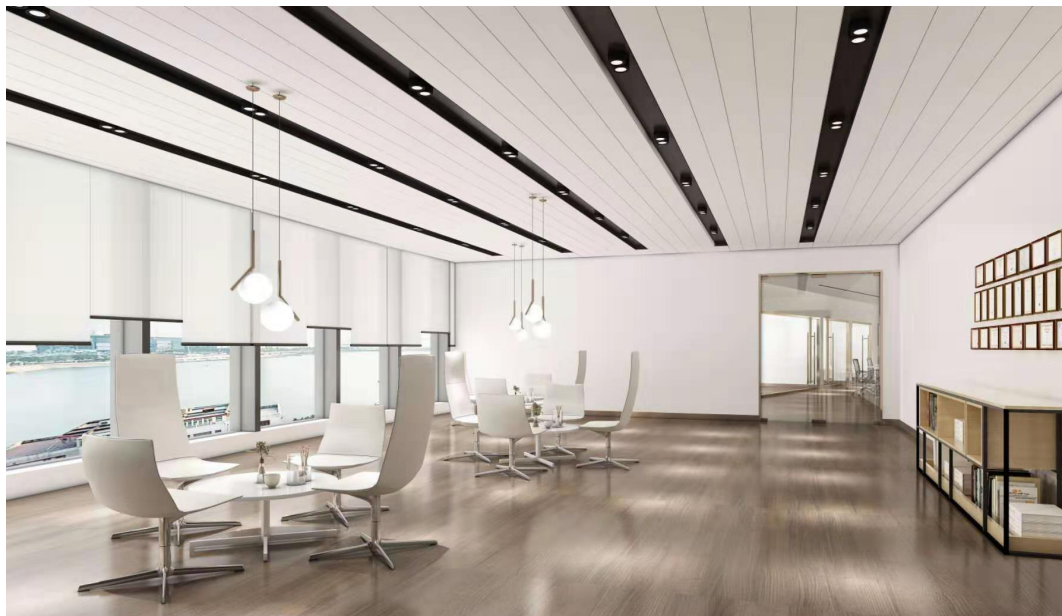
公共空間

Common Area

- 會客、咖啡廳及用膳區
Meeting Area, Cafe,
Canteen
- VIP會客區
VIP Guest Meeting



十三樓平面圖 Floor Plan of 13th Floor

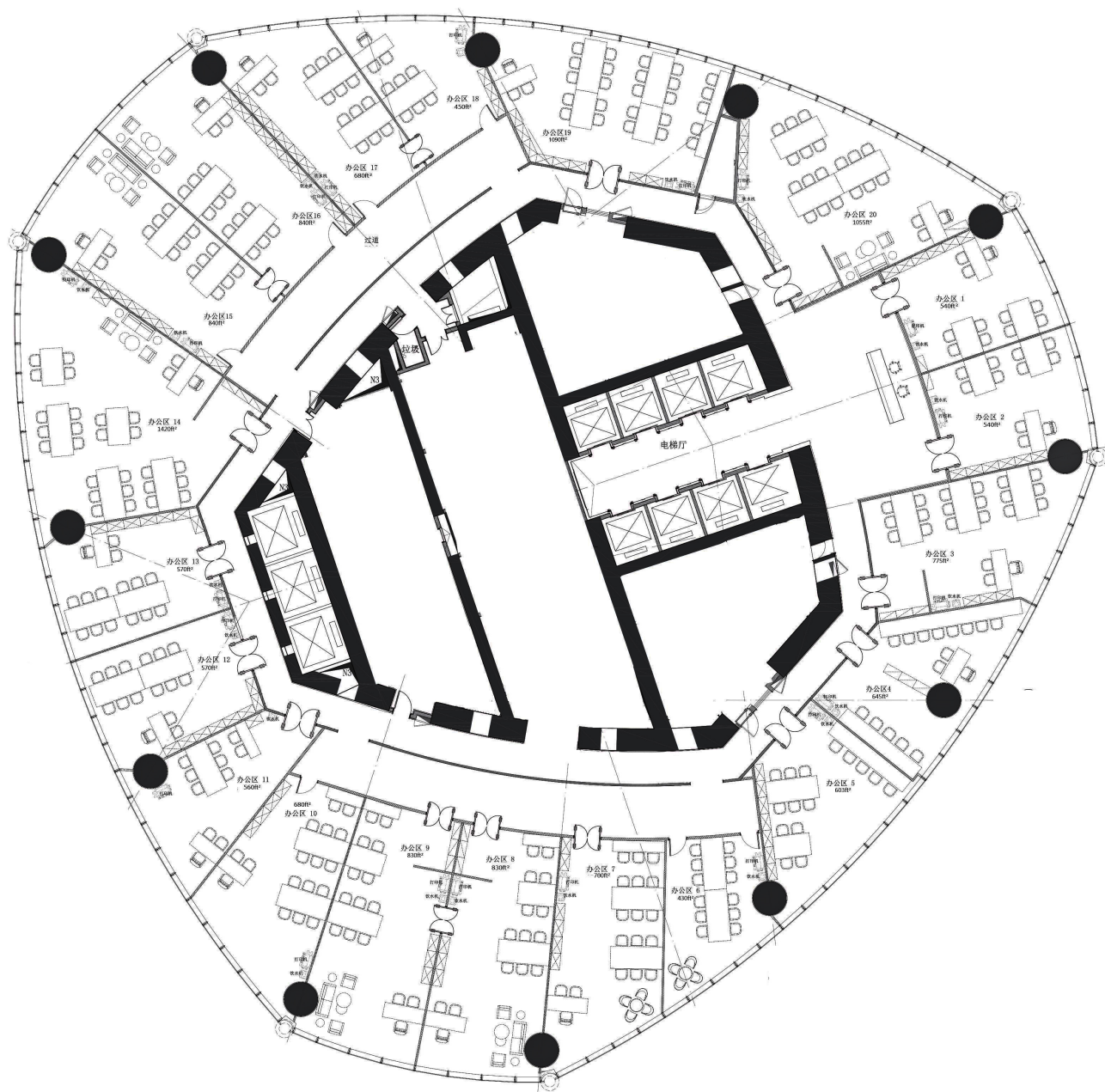


工作室

Studio Area

1號工作室Studio #1 : 540ft²
2號工作室Studio #2 : 540ft²
3號工作室Studio #3 : 775ft²
4號工作室Studio #4 : 645ft²
5號工作室Studio #5 : 603ft²
6號工作室Studio #6 : 430ft²
7號工作室Studio #7 : 700ft²
8號工作室Studio #8 : 830ft²
9號工作室Studio #9 : 830ft²
10號工作室Studio #10 : 680ft²

11號工作室Studio #11 : 560ft²
12號工作室Studio #12 : 570ft²
13號工作室Studio #13 : 570ft²
14號工作室Studio #14 : 1420ft²
15號工作室Studio #15 : 840ft²
16號工作室Studio #16 : 840ft²
17號工作室Studio #17 : 680ft²
18號工作室Studio #18 : 450ft²
19號工作室Studio #19 : 1090ft²
20號工作室Studio #20 : 1055ft²



十二樓平面圖 Floor Plan of 12th Floor

申請對象

業務屬環境設計、產品設計、空間設計、視覺傳達設計、包裝設計、信息設計、互動設計、時裝及飾物設計、動畫設計等其中一項的企業，公共實體除外。

申請資格

澳門註冊成立之企業，以公司名義提出申請。

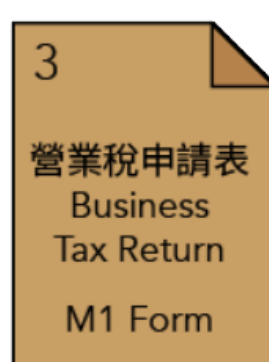
如商業企業主為自然人，其須為澳門特別行政區居民；如商業企業主為法人，則該法人百分之五十以上的資本需由澳門特別行政區居民擁有。

申請程序

提交以下文件：

1. 申請表
2. 申請計劃書，內容包括公司簡介及借用期內的工作計劃等
3. 營業稅申報表（M/1表格）影印本或財政局發出的開業聲明書
4. 法定代表的身份證明文件影印本
5. 公佈中規定的其他相關資料

申請資料倘有遺漏，於五天內通知申請者/企業補交，補交期限為五天，逾期者視作放棄申請論。



*所有資料僅用作評審之用。

Applicants

For those business belongs to environment design, product design, spatial design, visual communication design, package design, message design, interactive design, fashion and accessory design, animation design etc, (except for public entities).

Qualifications

Apply under your company name in which the company should be registered and established in Macau.

If the commercial entity is natural person, that person must be Macau citizen; if the commercial entity is corporate body, more than 50% of the corporate entity' s capital must be owned by a Macau citizen.

Procedures

Please submit the following documents:

1. Application form
2. Application proposal (please includes your company introduction and the work plan (what you will do) during the stationed period
3. Corporate Tax declaration form (M/1 form) in copy or the
4. ID copy of the legal representatives
5. Other related information listed in the announcement

We will inform the applicant in 5 days if there are any missing documents, deadline for handing in the missing documents will be 5 days, overdue shall be deemed to have declined the application.

* All the information will only be used during the assessment.

評審方式及程序

1. 由珠澳設計中心先審查各項必備文件，符合要求後安排甄選小組評審，如有需要甄選小組將要求申請者/企業進行現場簡報。

2. 評審標準（由甄選小組訂定）

甄選小組按下列項目對符合要求的申請進行評審：

- (1) 具備申請資格
- (2) 具備足以支付相關進駐費用之能力
- (3) 申請計劃的可行性
- (4) 申請企業性質及借用期內的工作計劃為主要考量

服務收費標準

租金：首兩年免租金

管理費：5元人民幣/平方呎

權利

可免費或優惠價使用珠澳設計中心所提供之相關服務

義務

- 1. 遵守珠澳設計中心所規範之使用規則
- 2. 配合珠澳設計中心所制定之各項相關規定
- 3. 遵守澳門及內地相關營商法律法規
- 4. 需按照計劃進駐適當人手以維持日常運作
- 5. 按協議定期繳交管理費

Assessment Procedures

1. Zhuhai Macau Design Centre will assess the required documents first, after that the judges will assess the qualified application, the applicants need to provide presentation if requested from the judges.

2. Assessment criteria (set by the judges)

The judges will follow the rules to assess the qualified application below :

- (1) Qualified for the application
- (2) Capable to make the payment to be stationed in
- (3) The feasibility of the application proposal
- (4) The nature of applicant's company and the work plan

Service Charge Standard

Rental: Free of charge for first two years

Management fee: 5 RMB ft²

Rights

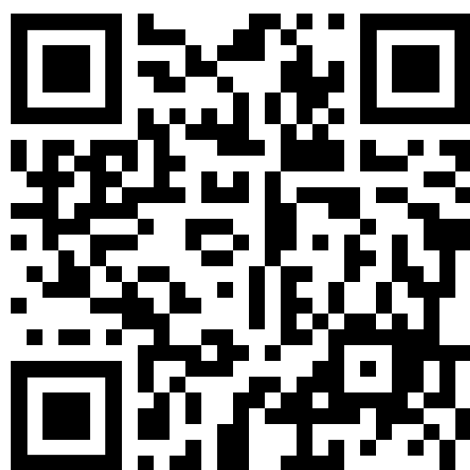
Make use of the facility or service provided by Zhuhai Macau Design Centre with discount or free of charge.

Obligations

- 1. Obey the standard rules set by Zhuhai Macau Design Centre
- 2. Obey the regulations set by Zhuhai Macau Design Centre
- 3. Obey the related business laws and regulations in both Macau and China
- 4. Assign appropriate manpower in order to maintain daily operation
- 5. Pay the management fee on time as mentioned in the agreement

掃描二維碼報名場地視察

Scan QR Code for Site Visiting



掃描二維碼下載工作室申請表

Scan QR Code for Application Form

